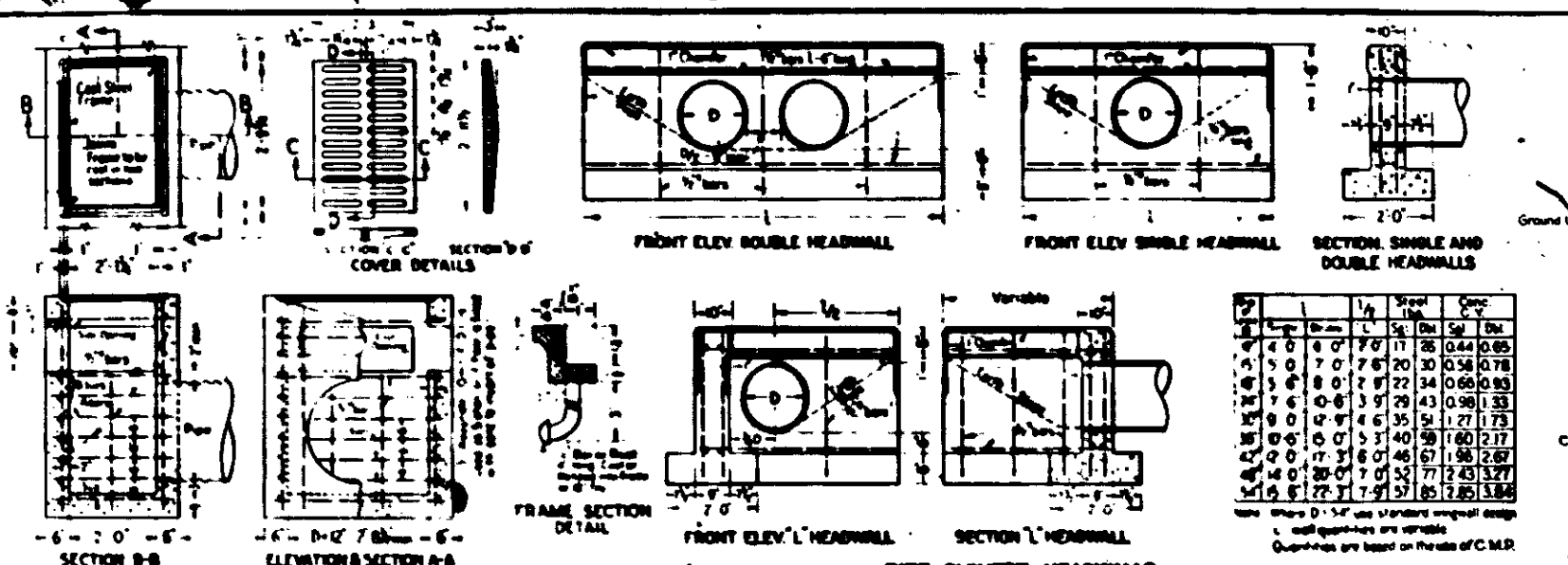


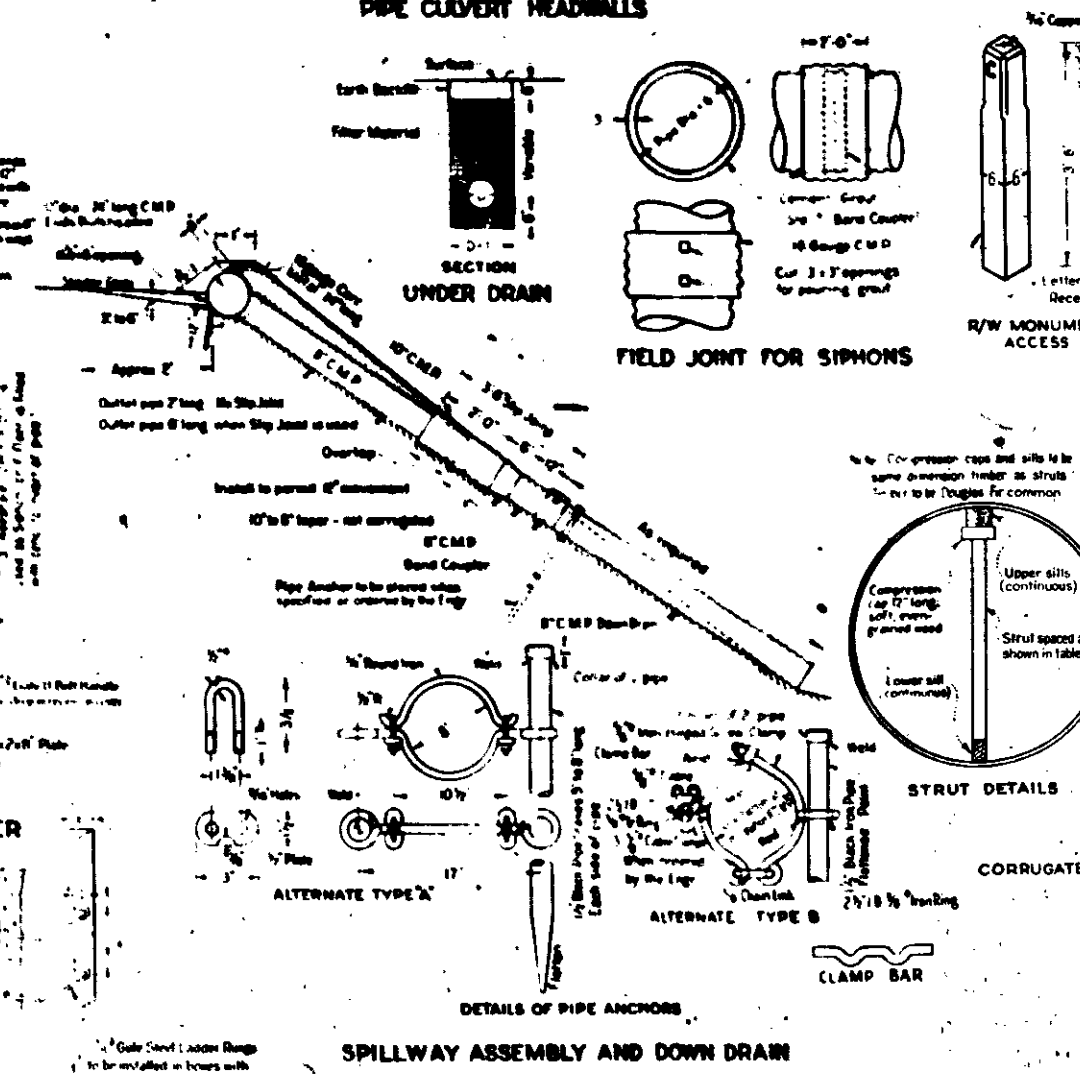
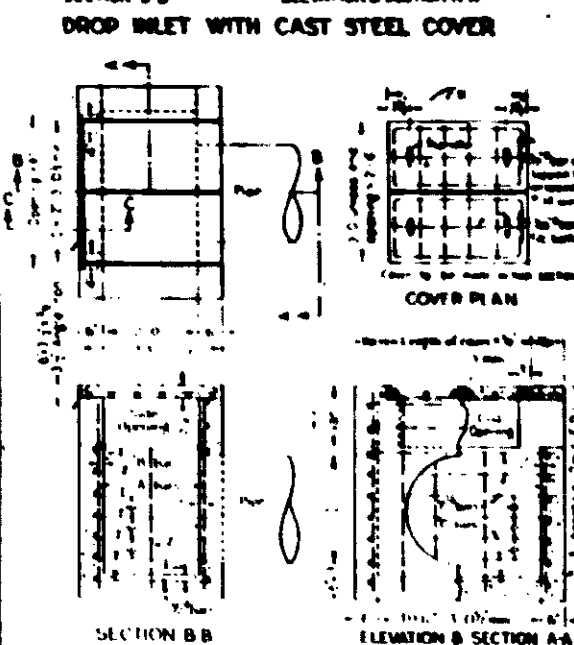
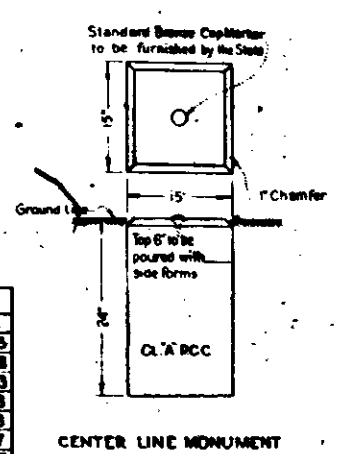
Di. of Pipe	0 to 15' Fill	15 to 30' Fill	30 to 40' Fill	40 to 50' Fill	50 to 60' Fill	60 to 70' Fill	70 to 80' Fill	80 to 100' Fill
48"	4x4	6-0	4x4	5-6	4x4	4-6	4x4	4-6
54"	4x4	6-0	4x4	5-0	4x4	4-0	4x4	3-6
60"	4x4	6-0	4x4	4-6	4x4	4-0	4x4	3-6
66"	4x4	6-0	4x4	4-6	4x4	4-0	4x4	3-6
72"	4x4	6-0	4x4	4-6	4x4	4-0	4x4	3-6
78"	4x4	6-0	4x4	4-6	4x4	4-0	4x4	3-6
84"	4x4	6-0	4x4	4-6	4x4	4-0	4x4	3-6
90"	4x4	6-0	4x4	4-6	4x4	4-0	4x4	3-6
96"	4x4	6-0	4x4	4-6	4x4	4-0	4x4	3-6

STATE OF CALIFORNIA  
DEPARTMENT OF PUBLIC WORKS  
DIVISION OF HIGHWAYS  
**STANDARD STRUCTURES  
PIPE HEADWALLS-ETC.**



Span	Chamfer	Top Flange	Bottom Flange	Top Flange	Bottom Flange
4.0	8.0	7.0	11.25	0.44	0.65
5.0	7.0	7.5	20.30	0.56	0.78
6.0	8.0	7.5	22.34	0.66	0.93
7.0	8.0	7.5	29.29	0.98	1.33
8.0	8.0	7.5	35.54	1.27	1.73
9.0	8.0	7.5	40.58	1.60	2.17
10.0	8.0	7.5	46.67	1.88	2.67
12.0	8.0	7.5	57.71	2.43	3.27
14.0	8.0	7.5	67.57	2.85	3.86

Note: Where D = 54" use standard original design  
 1. wall thicknesses are variable  
 2. quantities are based on the size of C.M.R.



Di. of Pipe	0 to 15' Fill	15 to 30' Fill	30 to 40' Fill	40 to 50' Fill	50 to 60' Fill	60 to 70' Fill	70 to 80' Fill	80 to 100' Fill
48"	4x4	6-0	4x4	5-6	4x4	4-6	4x4	4-6
54"	4x4	6-0	4x4	6-0	4x4	5-0	4x4	4-6
60"	4x4	6-0	4x4	6-0	4x4	4-6	4x4	3-6
66"	4x4	6-0	4x4	6-0	4x4	5-6	4x4	4-6
72"	4x4	6-0	4x4	6-0	4x4	5-6	4x4	4-6
78"	4x4	6-0	4x4	6-0	4x4	5-0	4x4	4-6
84"	4x4	6-0	4x4	6-0	4x4	5-0	4x4	4-6
90"	4x4	6-0	4x4	6-0	4x4	5-0	4x4	4-6
96"	4x4	6-0	4x4	6-0	4x4	5-0	4x4	4-6

**FIELD ASSEMBLED PLATE CULVERTS**

Di. of Pipe	0 to 15' Fill	15 to 30' Fill	30 to 40' Fill	40 to 50' Fill	50 to 60' Fill	60 to 70' Fill	70 to 80' Fill	80 to 100' Fill
60"	4x4	6-0	4x4	6-0	4x4	5-6	4x4	4-6
75"	4x4	6-0	4x4	6-0	4x4	5-6	4x4	4-6
90"	4x4	6-0	4x4	6-0	4x4	5-0	4x4	4-6
105"	4x4	6-0	4x4	6-0	4x4	4-6	4x4	4-6
120"	4x4	6-0	4x4	6-0	4x4	4-6	4x4	4-6
135"	4x4	6-0	4x4	6-0	4x4	4-6	4x4	4-6
150"	4x4	6-0	4x4	6-0	4x4	4-6	4x4	4-6
165"	4x4	6-0	4x4	6-0	4x4	4-6	4x4	4-6
180"	4x4	6-0	4x4	6-0	4x4	4-6	4x4	4-6